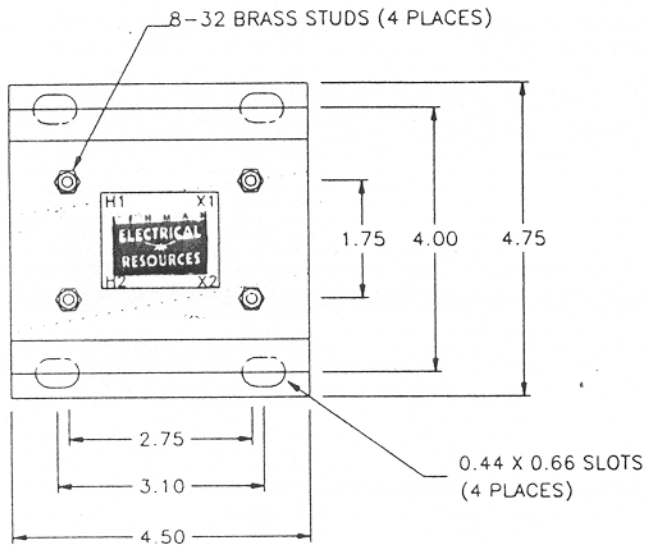


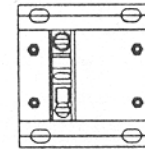
MODEL LVTW02 1PH POTENTIAL TRANSFORMER

FEATURES

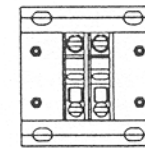
- Thermal rating 200VA @ 30°C Ambient
133VA @ 55°C Ambient
- Complies to ANSI C57.13 and applicable IEC standards
- Other voltages and ratios available, contact factory for information
- Accuracy Class 0.3W, 0.6X, and 1.2M.
- Insulation Class 0.6KV BIL 10KV
- Durable non-metallic housing with aluminum mounting brackets



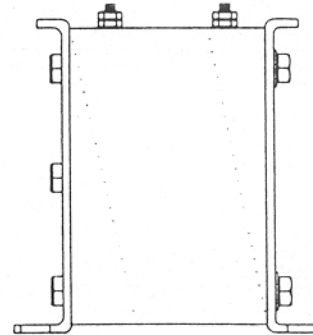
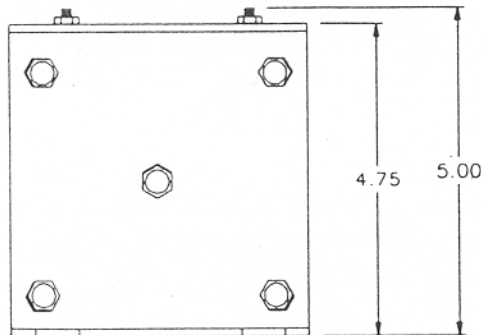
PART NUMBER	VOLTAGE RATING	FREQUENCY	RATIO
LVTW02-0001	208:120V	60HZ	1.73:1
LVTW02-0002	240:120V	60HZ	2:1
LVTW02-0004	480:120V	60HZ	4:1
LVTW02-0005	600:120V	60HZ	5:1
LVTW02-0006	277:120V	60HZ	2.31:1
LVTW02-0007	120:120V	60HZ	1:1



ONE FUSE BLOCK OPTION



TWO FUSE BLOCK OPTION



200 VA