

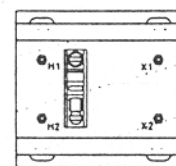
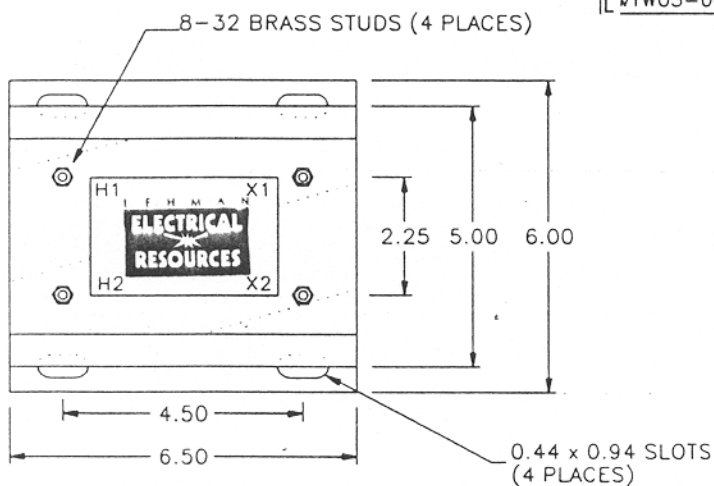
# MODEL LVTW03

# 1PH POTENTIAL TRANSFORMER

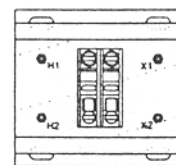
## FEATURES .....

- Thermal rating 500VA @ 30°C Ambient  
300VA @ 55°C Ambient
- Complies to ANSI C57.13 and applicable IEC standards
- Other voltages and ratios available, contact factory for information
- Accuracy Class 0.3W, X, M, 0.6Y.
- Insulation Class 0.6KV BIL 10KV.
- Durable non-metallic housing with aluminum mounting brackets

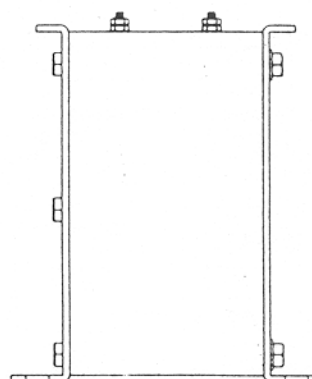
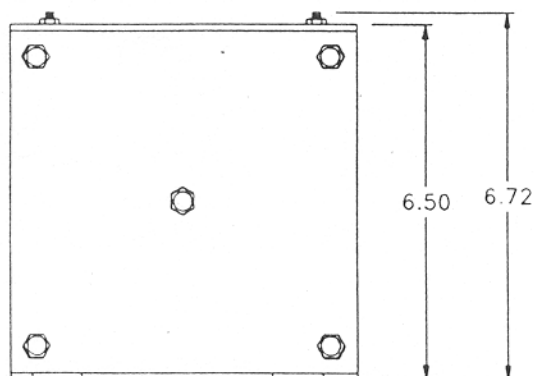
PART NUMBER	VOLTAGE RATING	FREQUENCY	RATIO
LVTW03-0001	208:120V	60HZ	1.73:1
LVTW03-0002	240:120V	60HZ	2:1
LVTW03-0004	480:120V	60HZ	4:1
LVTW03-0005	600:120V	60HZ	5:1
LVTW03-0006	277:120V	60HZ	2.31:1
LVTW03-0007	120:120V	60HZ	1:1



ONE FUSE BLOCK OPTION



TWO FUSE BLOCK OPTION



500 VA